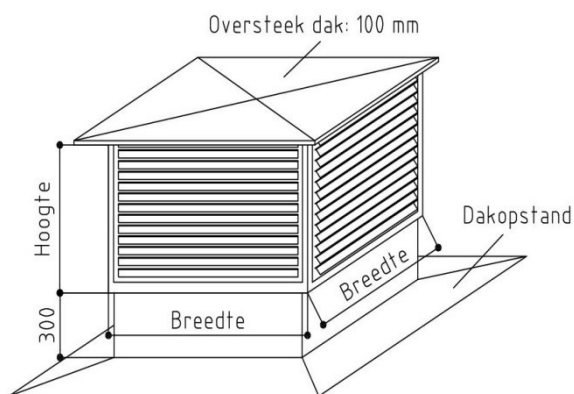


DKR – Roof cap



Description:

The roof cap is suitable for intake or exhaust of ventilation air in air handling installations. It is possible to combine both air intake and exhaust air in the same roof cap, where one part is used for the intake and the other for the exhaust.

Materials:

The profiles are made of aluminum, the louvres are made of anodised aluminium, the corners are made from Zamak and the roof and base plate are made of galvanised steel. The optional roof socket is made of anodised aluminium.

The louvres have a wire mesh on the inside, mesh size 19x19mm.

Mounting:

The roof cap can be fixed onto the roof socket with bolts and nuts.

Finish:

Standard:

Aluminum, not painted.

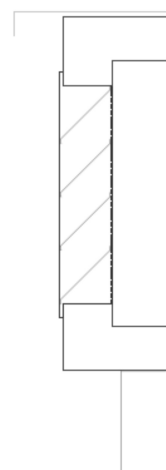
With 4 louvres

Optional:

Color coating in RAL color of choice (50% price increase)

Special dimensions, square or rectangular: on request.

Combination of intake and exhaust in the same roof cap: on request.



| Type DKR | Width (mm) | Height (mm) | A _{netto} / 4 louvres (m ²) | Air flow at 2m/s (m ³ /h) | Air flow at 3m/s (m ³ /h) |
|----------|------------|-------------|--|--------------------------------------|--------------------------------------|
| 310/1 | 520 | 520 | 0,356 | 2 563 | 3 845 |
| 400/1 | 720 | 520 | 0,5 | 3 600 | 5 400 |
| 400/2 | 720 | 620 | 0,668 | 4 810 | 7 214 |
| 450/1 | 820 | 620 | 0,8 | 5 760 | 8 640 |
| 450/2 | 820 | 720 | 1,004 | 7 229 | 10 843 |
| 560/1 | 1020 | 820 | 1,088 | 7 834 | 11 750 |
| 710/1 | 1120 | 720 | 1,58 | 11 376 | 17 064 |
| 710/2 | 1120 | 820 | 1,836 | 13 219 | 19 829 |
| 800/1 | 1420 | 720 | 1,948 | 14 026 | 21 038 |